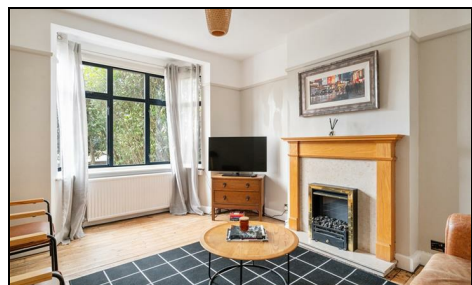
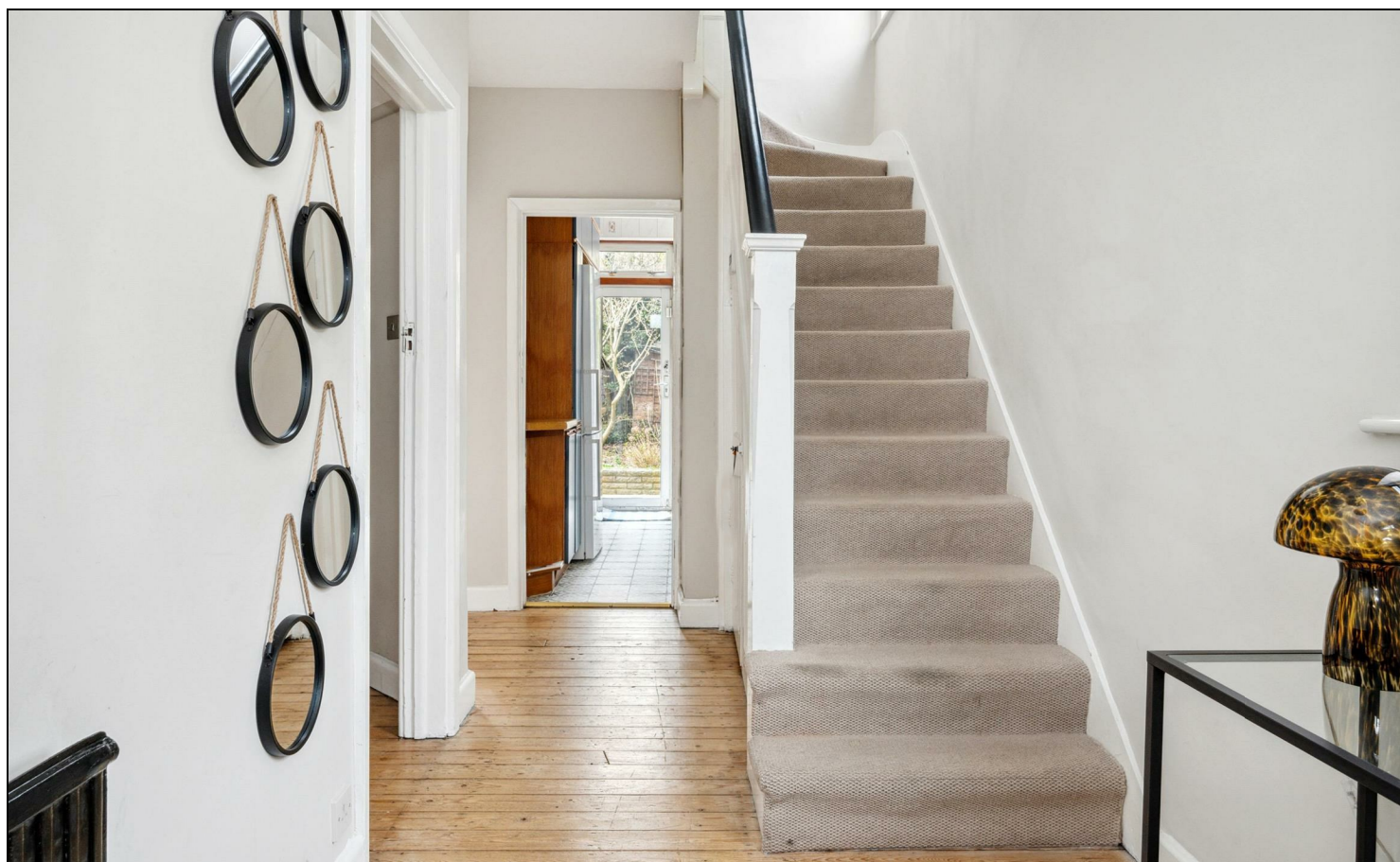


## Merton Mansions, Bushey Road Raynes Park, SW20 8DG

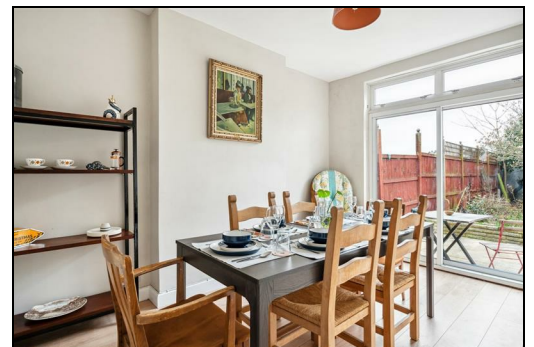
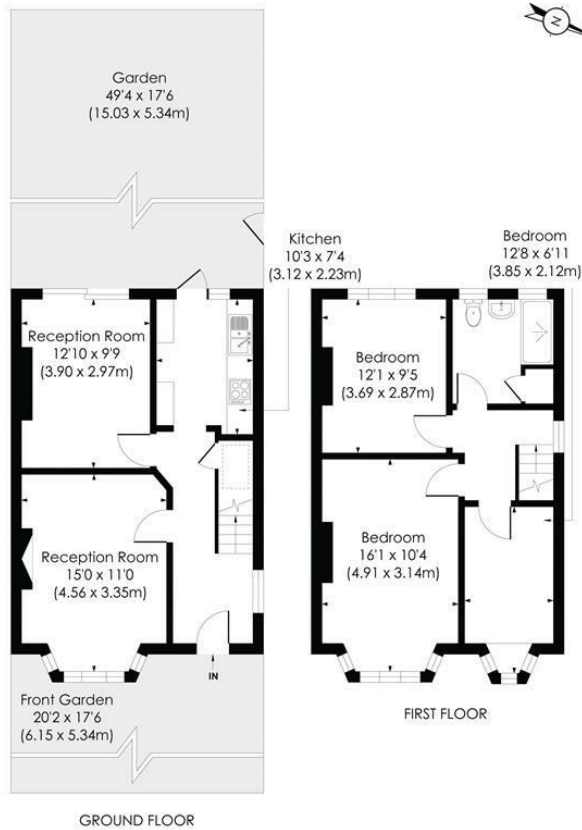
£675,000 Freehold



**This fantastic THREE DOUBLE BEDROOM, 1930s Detached House has off street parking, separate garage and West facing garden. Perfectly located for Wimbledon Chase and Raynes Park Stations. There is also two reception rooms, separate kitchen and modern bathroom. Potential to extend S.T.P.P sold with no onward chain.**

**MARTIN WAY, SW20**

Approx. Gross Internal Floor Area  
**949 Sq. ft/88.15 Sq. m**

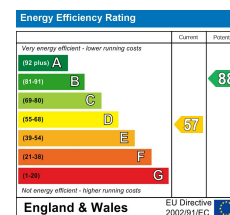


© Pixangle Property Marketing Ltd. info@pixangle.com Tel: 0208 870 2118



This floor plan has been prepared for the purpose of illustration only in accordance with the latest RICS code of measuring practice and is not to scale. All measurements and areas are approximate and whilst every effort has been made to ensure the accuracy of the plan contained here, no responsibility is taken for any error, omission or misstatement.

- Three Double Bedroom - Detached House
- West Facing Garden
- Well Presented Throughout
- Separate Garage and Parking to Front
- Close to Raynes Park Station
- Close to Wimbledon Chase Station
- No Onward Chain
- Potential To Extend S.T.P.P
- EPC - D
- Council Tax Band - E



**For Free Mortgage Quote and Best Mortgage Rates, call Ellisons Mortgage Advisor on 0208 944 9595**



Although these particulars are believed to be correct, their accuracy is not guaranteed and they do not form part of any contract.

**Celebrating 30 years of successful Sales and Lettings in Merton**

